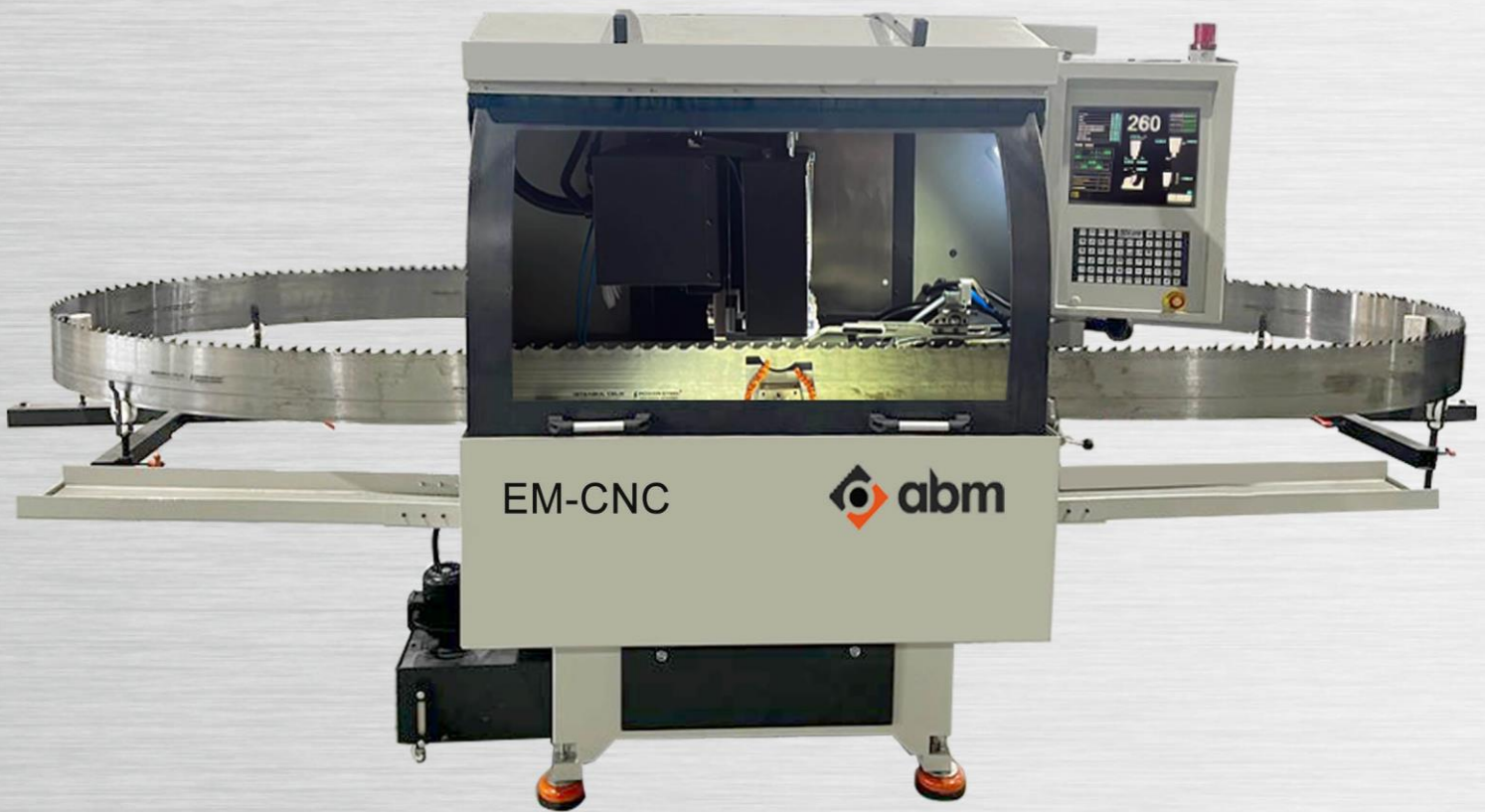


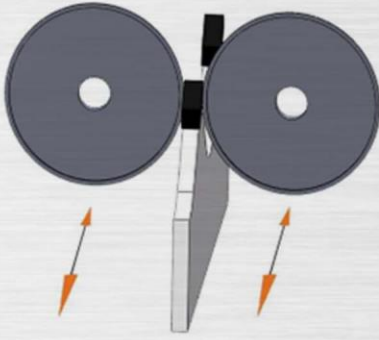
EM-CNC

CNC BAND SAW SIDE GRINDING MACHINE
6-Axes CNC controlled



abm
Grinding Technologies

EM-CNC



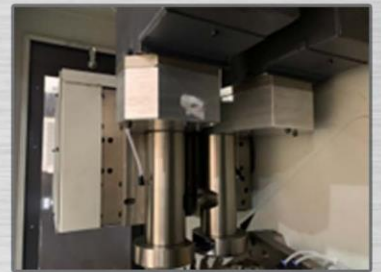
EM-CNC is an ideal machine to equalize both sides of the stellite tipped or swaged band saw teeth. EM-CNC simultaneously grinds two sides of the band saw teeth to provide flawless surface quality of the material cut. Full enclosure ensures operator and environment safety and control panel and adjustments enables machine control from outside of cabin.

GENERAL FEATURES

- 6 axes servo motor controlled.
- Automatic simultaneous side grinding of stellite tipped or swaged teeth of band saws.
- Maximum 200mm band saw width capacity
- Adjustable grinding speed.
- Automatic stop at cycle end.
- Automatic side grinding.
- Grinding heads riding on linear rails.
- Optional frame saw side grinding attachments.
- Precise infeed amount and grinding head angle adjustments
- Simple controls for ease of use
- Ensuring better surface quality on the material cut.
- Guaranteeing dimensional and formal accuracy of the material to be cut.
- Manual lubrication.
- Saw vertical movement by means of motor control from control panel
- Ergonomic use.
- Robust machine base

TECHNICAL SPECIFICATIONS

Band saw width	50-200mm
Band saw length	4 to 12meters (Adjustable)
Blade thickness	0.4 to 3 mm
Tooth pitch	Max. 60mm
Tooth depth	Max. 30mm
Hook angle	(0°) (+38°)
Feed rate (speed controlled)	Max. 90 teeth/min.
Dia Grinding wheel dimensions	D: Ø100mm d:Ø20mm
Dia Grinding wheel thickness	3-5mm (depending on tooth pitch)
Grinding wheel rpm	1400-5500 r.p.m.
Grinding wheel motor power	1,5kW x 2
Coolant type	Oil (Dia wheel)
Coolant motor capacity	100 lt/min.
Coolant pressure	6 bars.
Coolant container capacity	100lt.
Motor quantity	6
Connected load	~9,0kW
Voltage	380V, 3Ph, 50-60Hz
Net/gross weight	1250/1300kg
Dimensions	1550*2000*1550mm

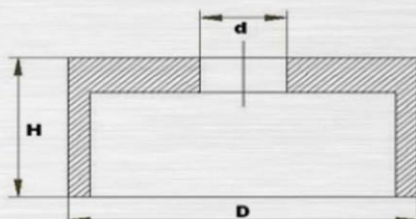


Robust grinding heads moving on linear rail system.



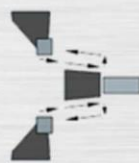
Saw lifter outside cabin and supporting index system (pneumatic)

Grinding Wheel



D: Ø100mm

H: Ø20mm



Grinding forward, lift-off and adjustable rapid return.



Grinding forward and backward without lift-off Spark-out function



Adjustable grinding forward, infeed and adjustable hydraulic slow return.



Spark-out / Multipass Function



Oscillation