

# OP-2000

## Automatic Knife Grinding Machine

[www.abmgroup.com.tr](http://www.abmgroup.com.tr)



**abm**  
*Grinding Technologies*

# OP-2000

## Automatic Knife Grinding Machine

OP-2000 is specially designed to grind the planer knives, all types of industrial blades, including paper knives, chipper knives for wood, recycling blades for plastic (granulating knives), peeling and veneer knives, slitter blades, guillotine knives, and tungsten carbide edged blades up to 2000mm length.

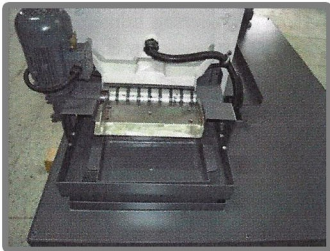
### General Features

- Automatic planer knife grinding up to 2000mm.
- Magnetic knife attachment.
- Microprocessor controlled.
- 24V control panel.
- Speed controlled between 0-11m/min.
- Grinding head riding on linear rails.
- High precision of 0,04mm infeed amount.
- 0,01mm infeed amount by optional step motor.
- Rigid machine base.
- Production conformed with CE standards.

### Technical Specifications

- |                              |                    |
|------------------------------|--------------------|
| - Grinding length            | 2000mm             |
| - Plate dimensions           | 80*160*2000mm      |
| - Plate turning angles       | (-90°) 0° (+90°)   |
| - Grinding wheel diameter    | Ø200mm             |
| - Motor quantity             | 4                  |
| - Grinding speed             | 0-11m/min.         |
| - Automatic infeed           | 0,04mm             |
| - Operating voltage          | 380V, 3Ph, 50-60Hz |
| - Coolant container capacity | ~70 lt.            |
| - Net/gross weight           | 1800/2000kg        |
| - Dimensions                 | 100*345*165cm      |

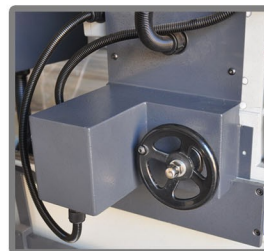
### Optionals



Magnetic Separator



Wheel Dresser Attachment

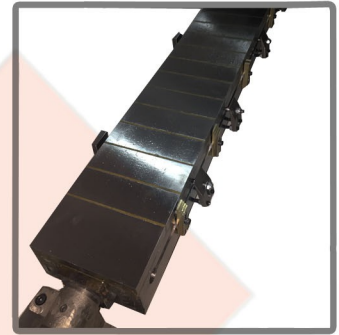
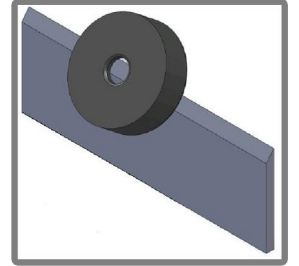
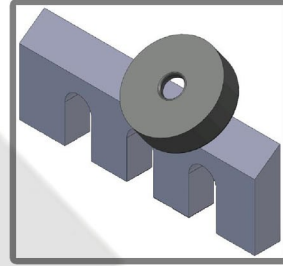


Motor Control Infeed For Carbide Knives

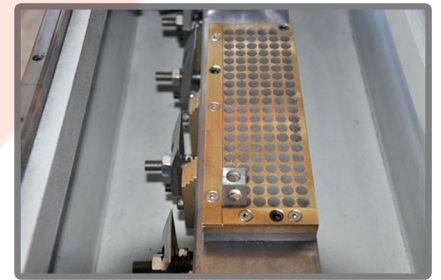


Finish Grinding Unit

### Purpose



Mechanical T-Slot System For Magnetic Table



Optional Magnetic Attachment For Replacable Inserts