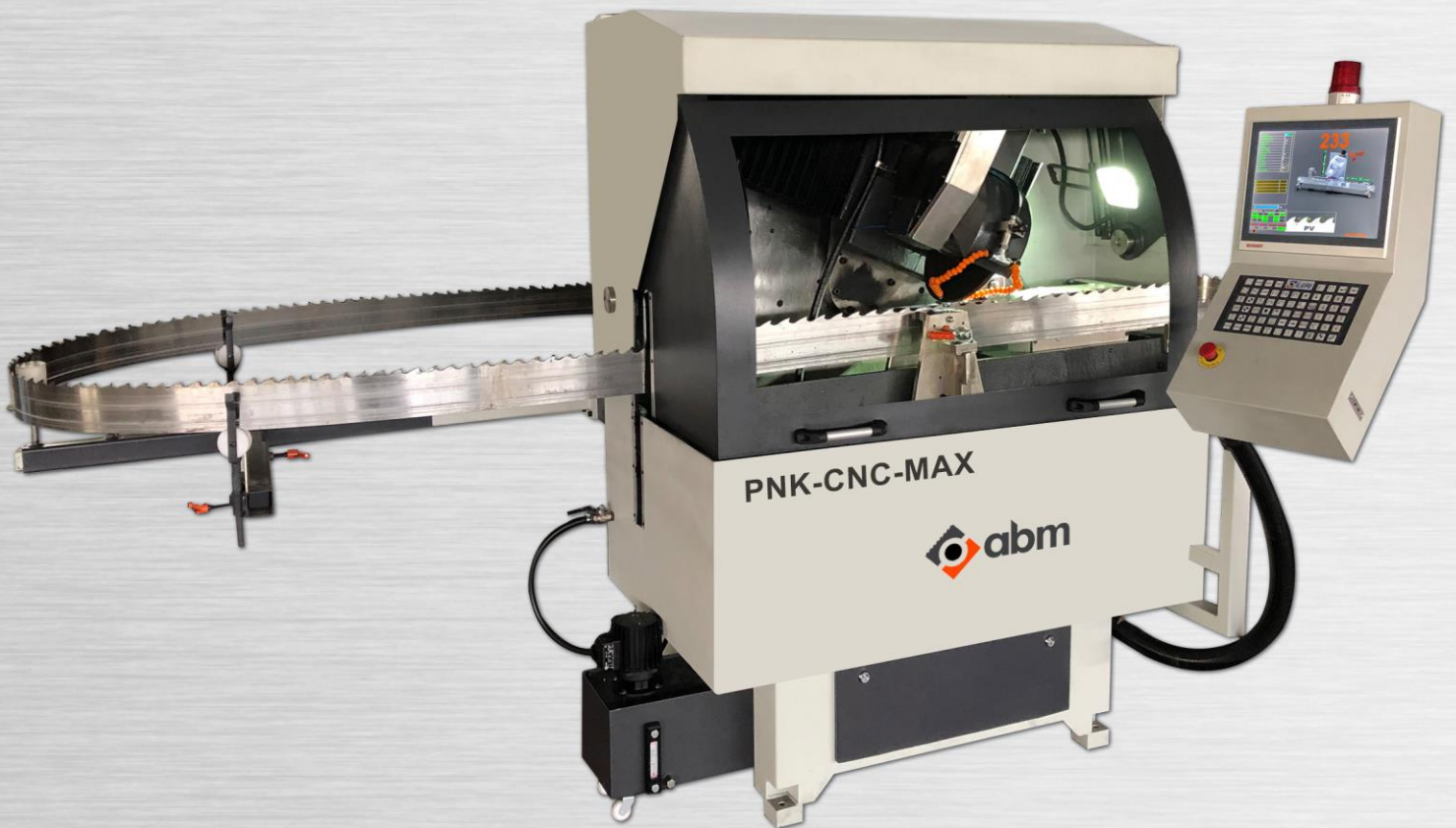


PNK-CNC MAX

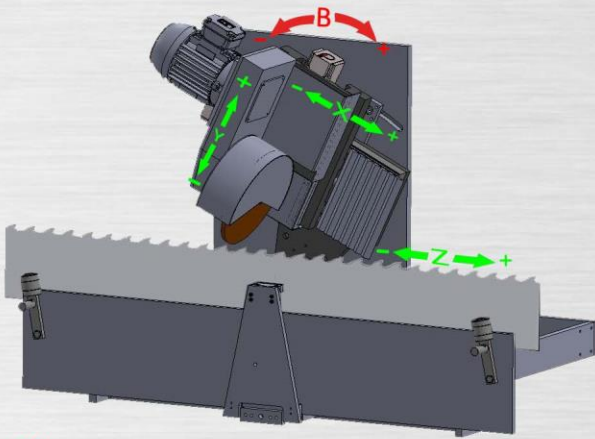
CNC BAND SAW GRINDER

3-Axes CNC controlled



abm
Grinding Technologies

PNK-CNC MAX



- (X) Infeed Axis
- (Y) Grinding Axis
- (Z) Indexing Axis
- (B) Back clearance – hook angle Axis

Tooth Forms



TECHNICAL SPECIFICATIONS

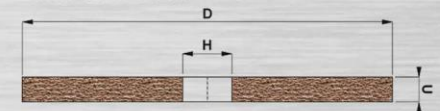
Band saw width	50-250mm (15-320mm Optional)
Band saw length	Max. 14m.
Blade thickness	0.6-3.2mm
Tooth pitch	Max. 80mm
Tooth depth	Max. 30mm
Tooth forms	NU,NV,KV,PV,PU,VP,SB
Hook angle	(-10°) (+35°)
Feed rate (speed controlled)	10 / 90 teeth/min.
Grinding wheel dimensions	D: Ø300mm d:Ø32mm
Grinding wheel thickness	5-13mm (depending on tooth pitch)
CBN Grinding wheel dimensions	D: Ø200mm d:Ø32mm
CBN Grinding wheel thickness	1.6-13mm (depending on tooth pitch)
Grinding wheel rotation (speed controlled)	1400-5500 r.p.m.
Grinding wheel motor power	3kW
Coolant type	Water emulsion(bakalite wheel) / Oil (CBN wheel)
Coolant motor capacity	80 lt/min.
Coolant pressure	10 Bars.
Coolant container capacity	90lt.
Motor quantity	6
Connected load	7,5kW
Voltage	380V, 3Ph, 50-60Hz
Net/gross weight	900/950kg

GENERAL FEATURES

- 3 axes Servo motor controlled.
- Operating screen in any language.
- PC controlled by Windows® operating system.
- Downloading a program through internet if demanded.
- 17" LCD touchscreen control panel.
- Language selection on the control panel.
- Tooth form selection from the control panel.
- Grinding all common tooth types.
- Possibility of saving grinding programs of the blades ground.
- Following the hook angle from the control panel.
- Indexing by servo motor.
- Absolute tooth pitch accuracy.
- Variable grinding speed.
- Variable grinding wheel rotation speed.
- Grinding head riding on linear rails.
- Grinding by CBN wheel or vitrified type wheel.
- Water emulsion/oil coolant [for CBN grinding].
- Central lubrication.
- Pneumatic lift-off band saw grinding.
- Optional CAD data integration.
- Included band saw carrier legs. Optional backside indexer.
- Motor controlled band saw vertical movement.
- Steady mechanic blade clamp.
- Enclosed cabin for operator safety.
- Ergonomic machine construction for ease of loading and unloading.
- Simple controls for ease of use.
- Rigid machine construction.
- Production conformed with CE standards.

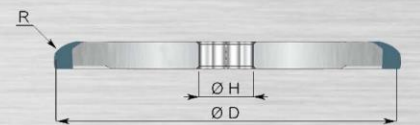
Grinding Wheels

Bakalite Wheels

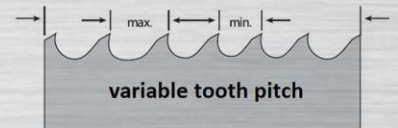


- D: Ø300mm
- H: Ø32mm
- u: 5-13mm

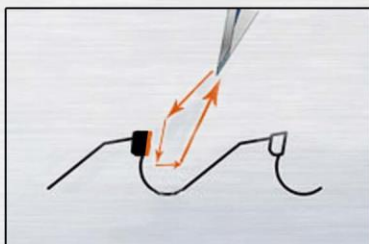
CBN Wheels



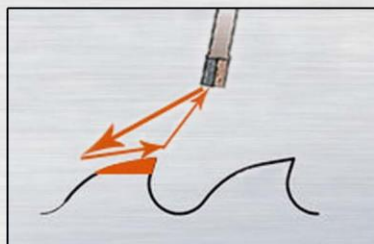
- D: Ø200mm
- H: Ø32mm



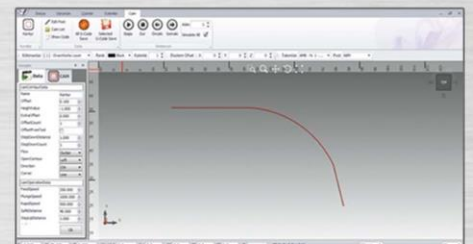
Variable Tooth Pitch (VP) Software



Carbide Tipped Band Saw Grinding Software



Bi-metal Band Saw Grinding Software



Optional ABM DrawWorks CAD Software

