

SPARQ



Advanced grinding, it's what a grinder should be...

## CNC DISC EROSION MACHINE FOR PCD TOOLS

The flexible, profitable solution

High technology to lead the ever-changing world of tool processing.

SPARQ, is designed to produce and service PCD cutters .Erosion process is completed in one set-up by means of integral measuring system, in order to achieve high precision and quality, machine main body is produced as single composite monoblock system. Mainly 3 type of tools can be processed by SPARQ;

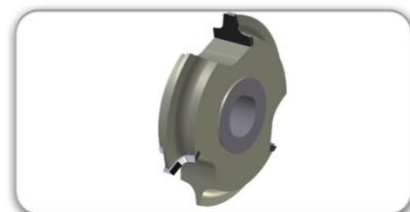
Mainly 3 type of tools can be processed by SPARQ:



Circular Saws and Hoggers



Helical cutters and router bits



Profile knives and moulders

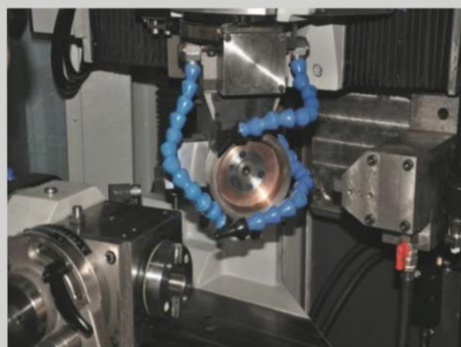
## A versatile response to meet all demands...



Operator friendly ABM-interface for ease of use.  
Positioning display of all 6 axes.

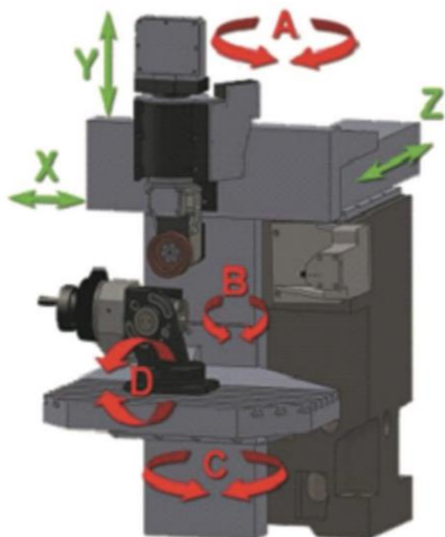
### GENERAL FEATURES

- 5-axes full CNC control, direct spindle system by additional 6th servo motor.
- Special plating on mechanical components ensure non-corroding and hardening.
- Integral measuring system for complex tool defining.
- Unique interfaces for tool production and service.
- 17" LCD display and operating interface in any stated language.
- Composite monoblock body ensures high rigidity and excelent surface quailty.
- Rapid tool comepesating by integral wheel dressing system.
- Wide capacity design to process common type of diamond tools.
- High volume and pressure of coolant to ensure the best condition for eroding process.
- Smart servo motors without requirement of calibration and referencing.
- Precise ISO 40 system motor controlled dividing head.
- Central lubrication system.
- Windows based PC control enables update over internet or flash drive.
- Generator specially designed by ABM.
- Open software philosophy ensuring unlimited programing ability.
- Robust based constructed in ergonomic cabin.



Rapid tool compensation by integral measuring system and wheel dressing unit

At ABM, we develop our machines, our own electronic systems and application software and manufacture all main mechanical components. Finally, we assemble and test the final product to global machine standards. Whichever ABM machine you choose for your grinding, you will know that it is built to meet the all market demands.



- (X) Horizontal Axis
- (Y) Vertical Axis
- (Z) Thickness Axis
- (A) Beveling Axis
- (B) Divisor Axis
- (C) Horizontal Rotation Axis
- (D) Vertical Rotation Axis

The true innovation is the product of experience and dynamics...



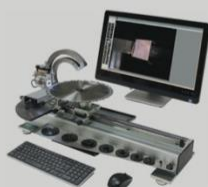
Integral fire extinguisher system with individual cabin



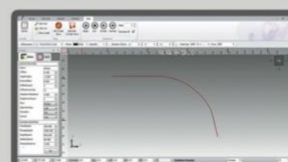
Central automatic lubrication system, optional coolant micro filtration system and optional air filtration system

### TECHNICAL SPECIFICATIONS

- |                              |                |
|------------------------------|----------------|
| • Tool Outer Diameter        | Maximum Ø600mm |
| • Holder Type                | ISO 40         |
| • Tool Weight                | Maximum 20 kg  |
| • Grinding length            | Maximum 150mm  |
| • Grinding Angle             | 360°           |
| • Beveling Angle             | +70°           |
| • Wheel Diameter             | Ø125/150mm     |
| • Wheel bore diameter        | Ø60mm          |
| • Coolant motor capacity     | ~55 lt/min.    |
| • Coolant container capacity | ~120 lt        |
| • Air supply                 | Minimum 6 Bars |
| • Total Power                | ~7.5kW         |
| • Net/Gross Weight           | 3250/3400 kg   |
| • Dimensions                 | 260*210*240 cm |



Optional Micro TECH<sup>®</sup> measuring machine



Optional ABM DrawWorks<sup>®</sup> CAD-CAM software for profiled tools.



# abm

**Grinding Technologies**



*Our path on grinding technologies production started in 1965, continues applying all modern technologies on our services. Not only in local market, our machines are working world-wide with dealers support in 25 countries and with our own sales team in more than 100 different countries.*



İTOB 10011 Sok. No:6 Tekeli, 35477, Menderes, İzmir, TÜRKİYE  
Phone: +90 232 782 6644 /1468 Fax: +90 232 782 2390  
www.abmgroup.com.tr • info@abmgroup.com.tr

